

## PREPARING THE LUMINAIRE

### RECESSED WALL MOUNT LUMINAIRE: SLR100

"LED"

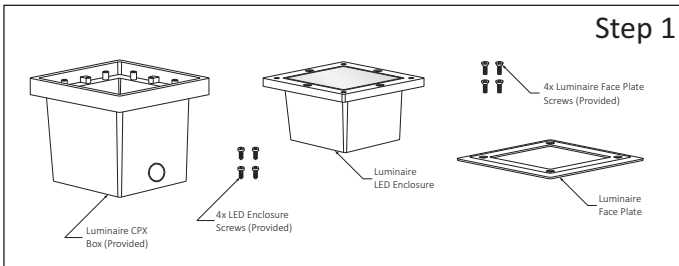
**SAVE THIS INSTRUCTIONS**

READ AND UNDERSTAND ALL INSTRUCTIONS BEFORE INSTALLATION. IF YOU ARE NOT FAMILIAR WITH THE NATIONAL ELECTRICAL CODE (NEC), CONTACT A QUALIFIED ELECTRICIAN TO INSTALL THIS LUMINAIRE.

**WARNING.-** Before installing this luminaire or doing any maintenance, turn off the power supply at the circuit breaker or fuse box. Turning the power off using the light switch is not sufficient to prevent electrical shock.

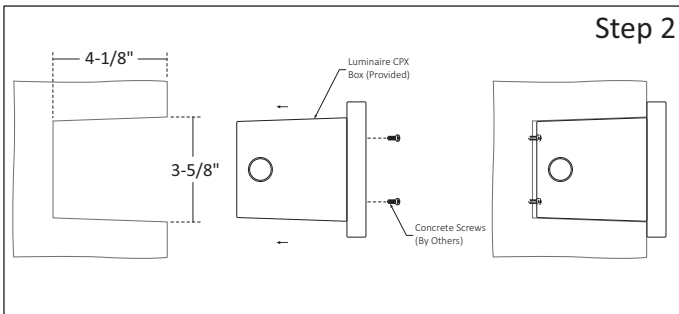
### NOTE:

To re-lamp, replacement parts or additional information, contact or visit manufacturer at [www.lumux.net](http://www.lumux.net)



#### Step 1 - Disassemble Luminaire Parts for easy Installation:

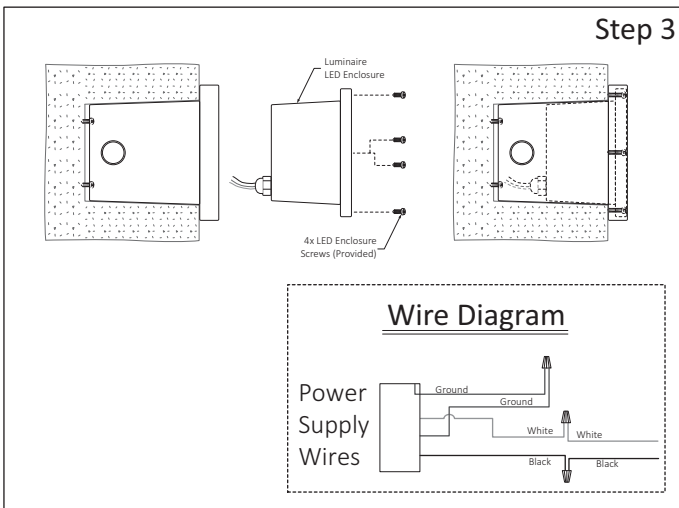
a.- Remove Luminaire Mounting Plate from Base Cover.



#### Step 2 - Install Luminaire CPX Box:

a.- Arrange CPX Wall Cavity and Insert Electrical Conduit through the KOs.

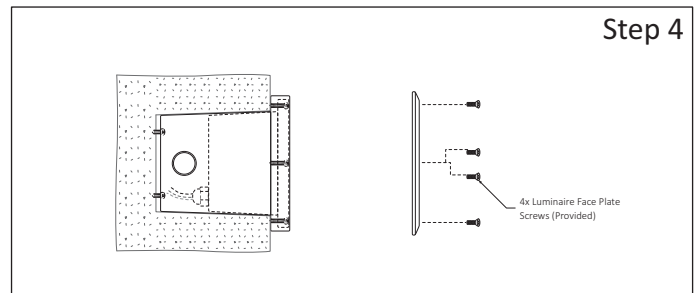
b.- Install the CPX Box and fasten using concrete screws by others.



#### Step 3 - Install LED Enclosure / Make Wiring Connections:

a.- Place Luminaire LED Enclosure close to the CPX Box and make hard-wire connections, see Wire Diagram.

b.- Install the LED Enclosure using the 4 Screws Provided.



#### Step 4 - Install Luminaire Face Plate:

a.- Install Luminaire Face Plate onto the LED Enclosure using the four Screws provided.

