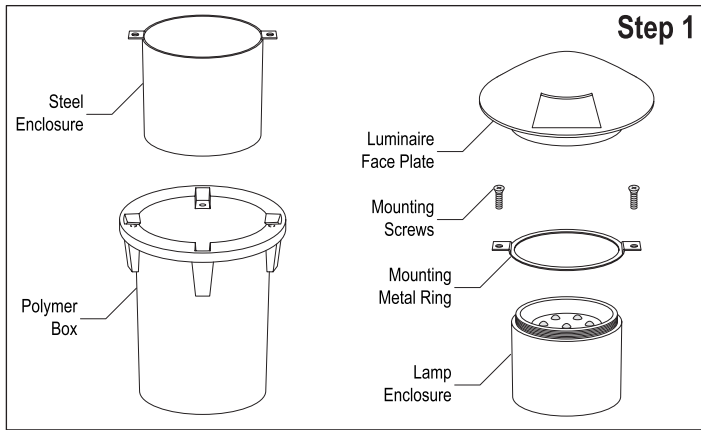


PREPARING THE LUMINAIRE

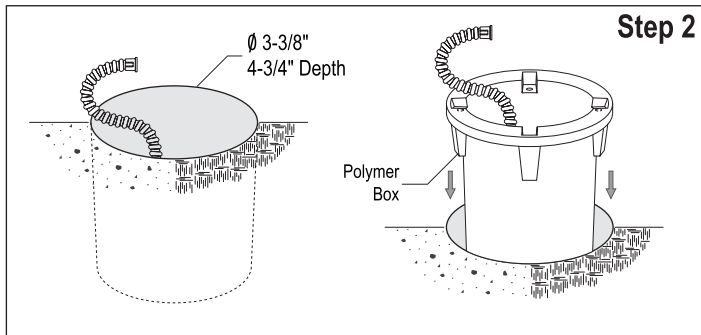
RECESSED MOUNT LUMINAIRE: PL500

SAVE THIS INSTRUCTIONS



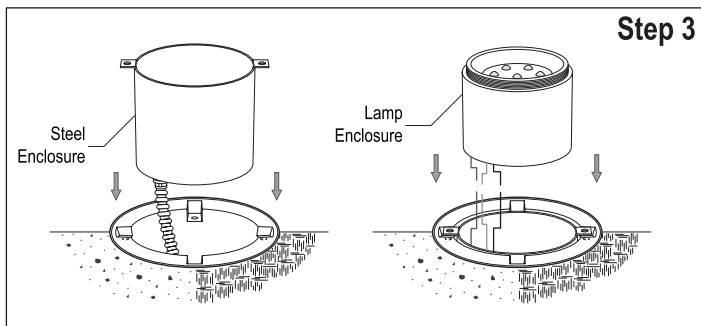
Step 1 - Remove Luminaire Parts for Installation:

- Unscrew Face Plate and all other parts.
- Get familiar with all parts and place them in a save place.



Step 2 - Prepare and Select Luminaire Location:

- Prepare an access cavity of 3-3/8" Diameter and 4-3/4" Depth to install the Polymer Box.
- Run the Electrical Conduit through the Polymer Box.
- Insert Polymer Box into the opening and make sure the edge is flash with the grade surface.



Step 3 - Install Luminaire Enclosures:

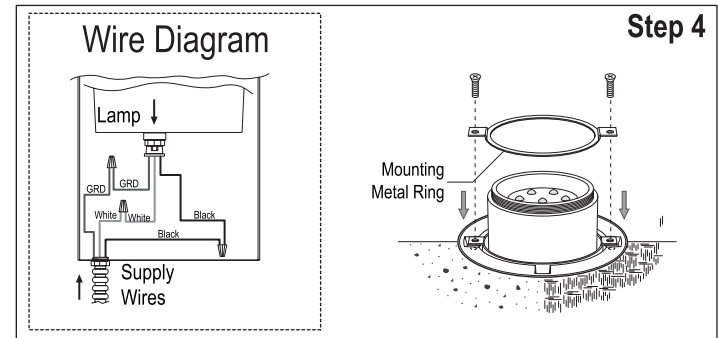
- Insert Electrical Conduit (by others) and attach to the Steel Enclosure and pull Electrical Wires.
- Place the Steel Enclosure into the Polymer Box and insert the notches through the slots.
- Place Lamp Enclosure and make wire connections.

READ AND UNDERSTAND ALL INSTRUCTIONS BEFORE INSTALLATION. IF YOU ARE NOT FAMILIAR WITH THE NATIONAL ELECTRICAL CODE (NEC), CONTACT A QUALIFIED ELECTRICIAN TO INSTALL THIS LUMINAIRE.

WARNING.- Before installing this luminaire or doing any maintenance, turn off the power supply at the circuit breaker or fuse box. Turning the power off using the light switch is not sufficient to prevent electrical shock.

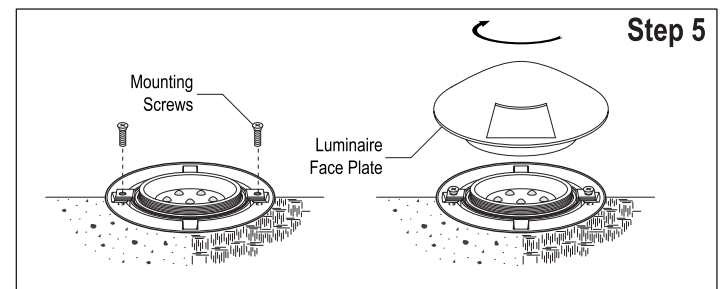
NOTE:

For re-lamping, replacement parts and additional information, contact or visit manufacturer at www.lumux.net



Step 4 - Installing Luminaire Parts:

- Insert Lamp Enclosure into the Steel Box.
- Insert Metal Ring through the Lamp Enclosure Collar.



Step 5 - Fastening the Luminaire Parts:

- Fasten the Metal Rings and Lamp Enclosure with the Mounting Screws (provided) into the Polymer Box.

Final Installation

