

LUMUX

STEP LIGHTS

SL900

The Lumux SL900 series is a precision engineered, recessed LED architectural step light that is designed for durability and performance. Constructed from the highest quality materials and components, this step light features a brass hooded cover and galvanized steel recessed housing. The body is seamlessly integrated as one piece with captive, vandal resistant stainless-steel screws. This step light features a shielded light source with a clear glass diffuser, reducing glare, and is energy efficient for long-lasting indoor and outdoor applications.

Housing: Heavy-duty construction of corrosion resistant, low-copper die cast aluminum. Faceplate secured with vandal resistant, stainless-steel screws.

Lens: 1/8" thick shatter proof clear glass diffuser

Mounting: Recessed wall or optional concrete pour box

Installation: Unit is provided with its own 4x4x2.5" J-Box with its matching 1.0" extension ring (mud ring)

Finish: Zinc polyester powder coat finish in black, white, silver, bronze, or any custom RAL color. Consult factory for marine grade or anti-microbial finish.

Driver: Constant current and universal input voltage 120/277V, starting temperature rated at -20°F. Dimmable option available (0-10v).

Gasket: Closed cell silicon foam gasket that seals out moisture, dust, and insects for weather tight operation.

Protection Class: IP65, ETL Listed for wet locations

Wattage: 3W

Color Temperature: 2700K / 3000K / 3500K / 4000K

Delivered Lumens:	2700K	3000K	3500K	4000K
	80Lm	89Lm	95Lm	100Lm

CRI: 90

Warranty: 5 year limited warranty

DATE:

PROJECT:

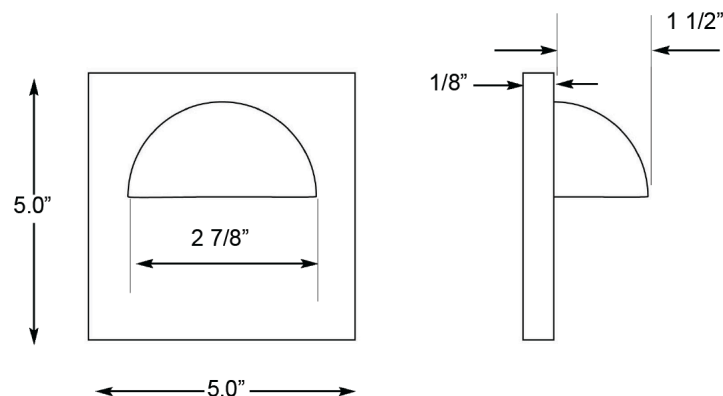
FIRM:

CATALOG NO.:

COMMENTS:



Dimensions:



LUMUX

STEP LIGHTS

SL900

DATE:

PROJECT:

FIRM:

CATALOG NO.:

COMMENTS:

Ordering Guide:

Catalog No.	LED Color	Color Temp ¹	Voltage	Finish
SL900	White		120-277	
	Blue	2700K		Black
	Amber	3000K		White
		3500K		Silver
		4000K		Bronze
				Custom RAL ²

¹Consult factory for additional options

²Consult factory for pricing

Catalog No.: _____