

LUMUX

STEP LIGHTS

SL2000R

The Lumux SL2000R series is a family of precision engineered, recessed LED architectural step lights that are designed for durability and performance. Constructed from the highest quality materials and components, this step light is offered in several form factors and grill options to fit any specification. A die cast aluminum body is seamlessly integrated as one-piece and shows no visible hardware. This step light features a clear glass diffuser, reducing glare, and is energy efficient for long-lasting indoor and outdoor applications.

Housing: Heavy-duty construction of one piece, corrosion resistant, low-copper die cast aluminum.

Lens: 1/8" thick shatter proof clear glass diffuser

Mounting: Recessed wall or concrete pour box

Installation: Unit is provided with its own polymer concrete pour box (see diagram for dimensions).

Finish: Zinc polyester powder coat finish in black, white, silver, bronze, or any custom RAL color. Consult factory for marine grade or anti-microbial finish.

Driver: Constant current and universal input voltage 120/277V, starting temperature rated at -20°F.

Gasket: Closed cell silicon foam gasket that seals out moisture, dust, and insects for weather tight operation.

Protection Class: IP65, ETL Listed for wet locations

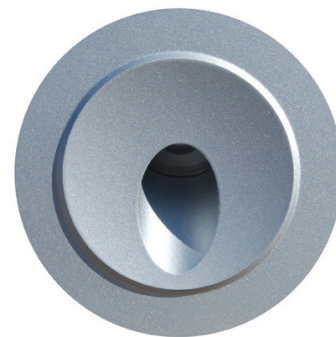
Wattage: 3W

Color Temperature: 2700K / 3000K / 3500K / 4000K

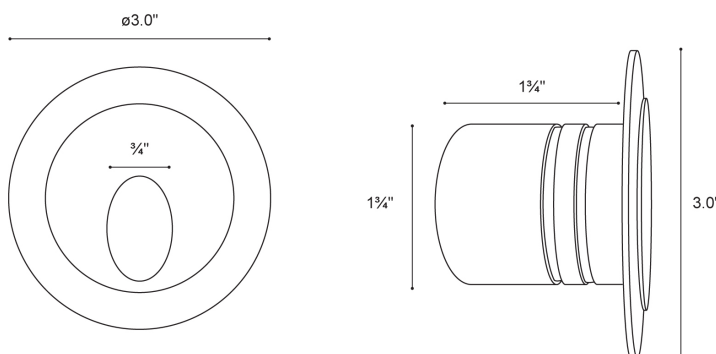
Delivered Lumens:	2700K	3000K	3500K	4000K
	53Lm	58Lm	61Lm	64Lm

CRI: 90

Warranty: 5 year limited warranty



Dimensions:



LUMUX

STEP LIGHTS

SL2000R

DATE:

PROJECT:

FIRM:

CATALOG NO.:

COMMENTS:

Ordering Guide:

Catalog No.	LED Color	Color Temp ¹	Voltage	Finish
SL2000R	White	2700K	120-277	Black
		3000K		White
		3500K		Silver
		4000K		Bronze
				Custom RAL ²

¹Consult factory for additional options

²Consult factory for pricing

Catalog No.: _____

Concrete Pour Box:

