

LUMUX

BOLLARD

BL350S

The Lumux Bollard ("BL") series is a family of precision engineered, architectural LED bollards offered in a wide variety of form factors. Intended to illuminate a variety of outdoor spaces, whether public or private, the Lumux Bollard line offers multiple light distributions, including 360-degree shielded or unshielded, symmetric, and downward facing light.

Constructed from heavy-duty die-cast aluminum or stainless-steel 316, Lumux bollards feature sleek designs with seamlessly integrated light sources. The Lumux Bollard combines form and function, offering architectural grade design while utilizing the highest quality of materials and components, providing long-lasting stability and durability that meets the most rigorous standards.

Housing: Heavy-duty construction of corrosion resistant, low copper extruded aluminum. All fasteners are vandal resistant stainless-steel screws.

Lens: Sealed one-piece, shatter proof, UV-rated clear glass diffuser.

Mounting: Secures with galvanized anchor bolts.

Installation: Mounting footplate (refer to diagram).

Finish: Zinc polyester powder coat finish in black, white, silver, bronze, or any custom RAL color. Consult factory for marine grade or anti-microbial finish.

Driver: Constant current and universal input voltage 120-277v, starting temperature rated at -20°F. Dimmable option available (0-10v).

Gasket: Closed cell silicon foam gasket that seals out moisture, dust, and insects for weather tight operation.

Protection Class: IP65, ETL Listed for wet locations.

CRI: 80

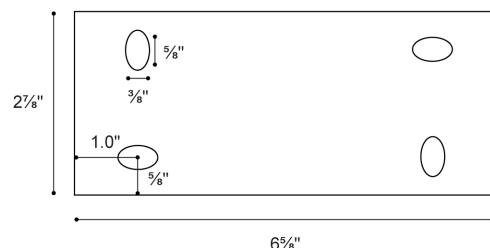
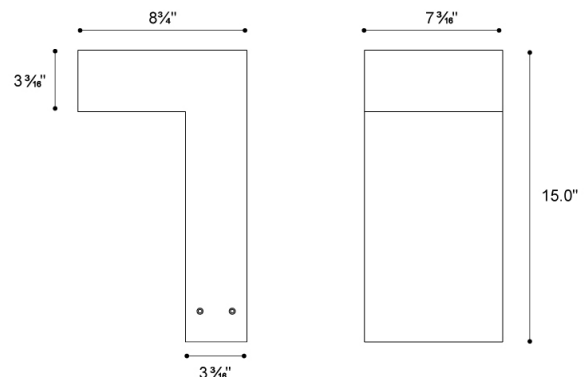
Warranty: 5 year limited warranty

Delivered Lumens & Wattage per color temperature:

| 2700K | 3000K | 3500K | 4000K | WATTS |
|--------|--------|----------|----------|-------|
| 900 lm | 900 lm | 1,000 lm | 1,000 lm | 28W |



Dimensions:



LUMUX

BOLLARD BL350S

BL350S is an elegant low-height pathway light with a modern design, perfect for campus, resort and residential use equally.

Ordering Guide

| Catalog No. | LED Color | Color Temp ¹ | Voltage | Finish ² | Options ² |
|-------------|-----------|-------------------------|----------|---------------------|---|
| BL350S | White | 2700K | 120-277v | Black | <input type="checkbox"/> Ground-spike <input type="checkbox"/> GFCI Dual Receptacle <input type="checkbox"/> Occupancy Sensor |
| | | 3000K | | White | |
| | | 3500K | | Silver | |
| | | 4000K | | Bronze | |
| | | | | Custom RAL | |

¹Consult factory for additional options

²Consult factory for additional pricing

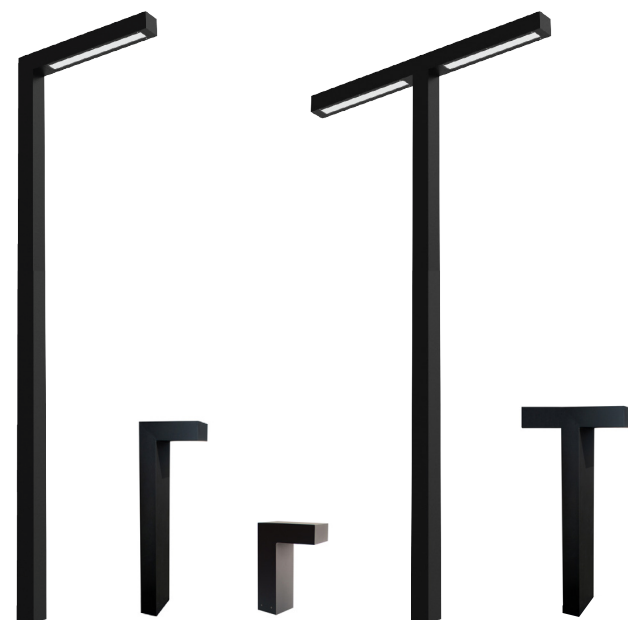
Catalog No.: _____

| Performance Specifications | |
|--|-----------------------------|
| Flux 900 lm (27K) ... 1,000 lm (40K) | LER 32 - 36 lm/W |
| Power 28.2W | 120-277v input voltage |
| Starting temp. rated to -20°F | GFCI dual receptacle option |
| Dimmable driver (0-10v) option | Occupancy sensor option |
| Lumen Maintenance*: L70 >60K hrs; L90 >50K hrs | |

| Environmental Specifications | |
|----------------------------------|------------------------------|
| BUG rating B1-U1-G0 | |
| CRI 80 | Color temperature options |
| IP65 | ETL listed for wet-locations |
| Effective Projected Area 1.0 ft2 | Marine Grade option |
| 5-year limited warranty | Made in the USA |



Luminaires in this series



PL2014 BL350 BL350S PL2014-2 BL350-2

*Lumen Maintenance Report (CREE CXA2520):
https://cree-led.com/media/documents/LM80_Results.pdf

Content of specification sheet subject to change

LUMUX

BOLLARD BL350S

DATE:

PROJECT:

FIRM:

CATALOG NO.:

COMMENTS:

Photometry

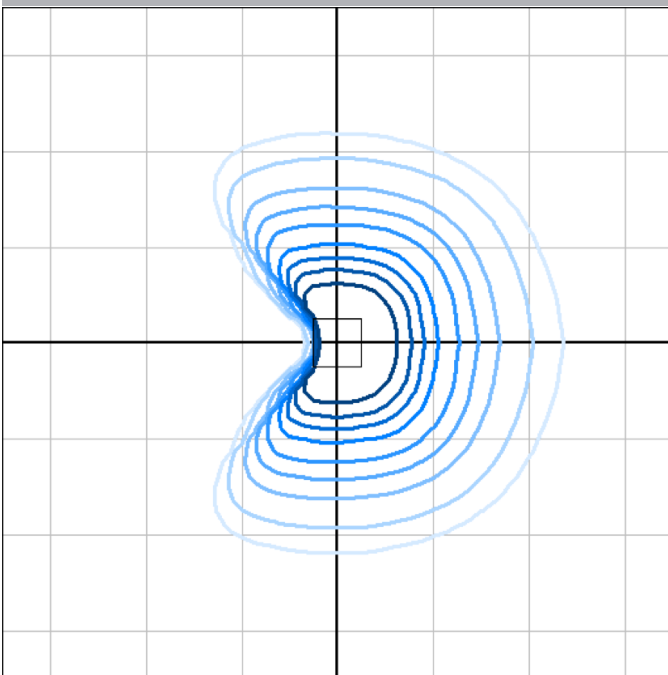
IESNA: LM-63-2002

| | |
|---------------------------------|-------------------------|
| TEST: 13799108.01 | TEST LAB: UL LLC |
| LUMINAIRE: BL350S | DATE: 2020-11-11 |
| IES Classification: Type I | Long. Class: Very Short |
| Luminaire Lumens | 1,023 (4000K) |
| Luminaire Efficacy Rating (LER) | 36 |
| Total Luminaire Watts | 28.181W |
| Upward Waste Light Ratio | 0.00 |
| Max. Candela | 772 |
| Max. Cd. < 90° Vertical | 772 |
| Max. Cd. (At 90 Deg. Vert.) | 2.5 (0.12%) |
| Max. Cd. (80 to <90 Deg. Vert.) | 8.1 (0.8%) |
| Cutoff Classification | NA |
| BUG Rating | B1-U1-G0 |

Technical aspects may change without notice.

IES Mounting Height for photometry plans: 12" / 1'

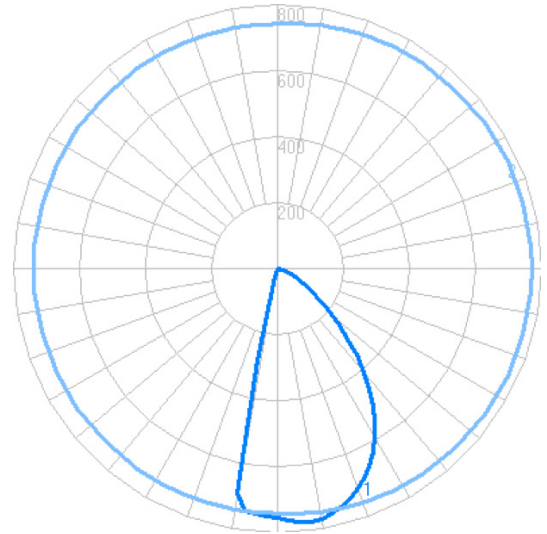
Iso-illumance



Foot-candles: 0.1, 0.2, 0.5, 1, 2, 5, 10, 20, 50 | Grid spacing 2'

Sample isoillumance plot. For actual values, use Lumux IES file with photometry software and correct surface reflectances.

Candela

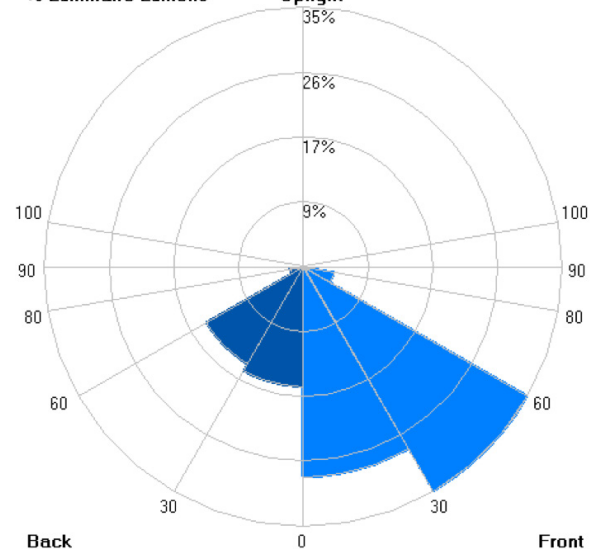


Zonal Lumens

| LCS | Zone | Lumens | %Lum. |
|-------|-----------|--------|-------|
| FL | (0-30) | 287.7 | 28.1 |
| FM | (30-60) | 354.9 | 34.7 |
| FH | (60-80) | 42.9 | 4.2 |
| FVH | (80-90) | 1.5 | 0.1 |
| BL | (0-30) | 164.2 | 16.0 |
| BM | (30-60) | 153.1 | 15.0 |
| BH | (60-80) | 18.3 | 1.8 |
| BVH | (80-90) | 0.3 | 0.0 |
| UL | (90-100) | 0.4 | 0.0 |
| UH | (100-180) | 0.2 | 0.0 |
| Total | | 1023 | 100 |

% Luminaire Lumens

Uplight



LUMUX LIGHTING

7803 Industry Ave, Pico Rivera, CA 90660

sales@lumux.com | 562-801-5100

Content of specification sheet subject to change