

LUMUX

BOLLARD

BL350S-2

The Lumux Bollard ("BL") series is a family of precision engineered, architectural LED bollards offered in a wide variety of form factors. Intended to illuminate a variety of outdoor spaces, whether public or private, the Lumux Bollard line offers multiple light distributions, including 360-degree shielded or unshielded, symmetric, and downward facing light.

Constructed from heavy-duty die-cast aluminum or stainless-steel 316, Lumux bollards feature sleek designs with seamlessly integrated light sources. The Lumux Bollard combines form and function, offering architectural grade design while utilizing the highest quality of materials and components, providing long-lasting stability and durability that meets the most rigorous standards.

Housing: Heavy-duty construction of corrosion resistant, low copper die-cast aluminum. All fasteners are vandal resistant stainless-steel screws.

Lens: Sealed one-piece, shatter proof, UV-rated polycarbonate.

Mounting: Secures with galvanized anchor bolts.

Installation: Mounting footplate (refer to diagram).

Finish: Zinc polyester powder coat finish in black, white, silver, bronze, or any custom RAL color. Consult factory for marine grade or anti-microbial finish.

Driver: Constant current and universal input voltage 120-277v, starting temperature rated at -20°F. 0-10v dimming available.

Gasket: Closed cell silicon foam gasket that seals out moisture, dust, and insects for weather tight operation.

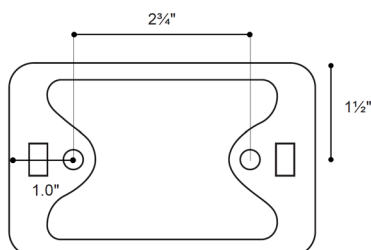
Protection Class: IP65, ETL Listed for wet locations.

CRI: 80

Warranty: 5 year limited warranty

Delivered Lumens & Wattage per color temperature:

2700K*	3000K	3500K*	4000K	WATTS
800 lm	850 lm	850 lm	850 lm	12.5W



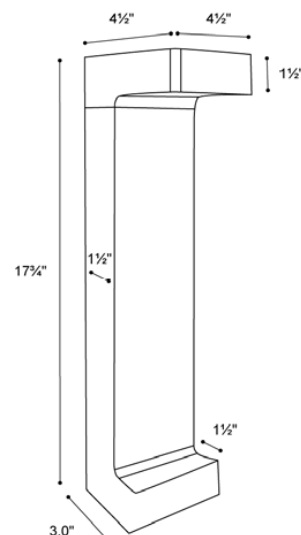
Mounting Plate & Anchor Bolt Pattern



BL350S-2



Luminaire Housing Dimensions:



* Estimated flux & Wattage

LUMUX

BOLLARD

BL350S-2

BL350S-2 is an elegant low-height pathway light with a modern design, perfect for campus, resort and residential use equally.

Ordering Guide

Catalog No.	LED Color	Color Temp ¹	Voltage	Finish ²	Options ²
BL350S-2	White	2700K	120-277v	Black	<input type="checkbox"/> 0-10v Dimming <input type="checkbox"/> Photocell
		3000K		White	
		3500K		Silver	
		4000K		Bronze	
				Custom RAL	

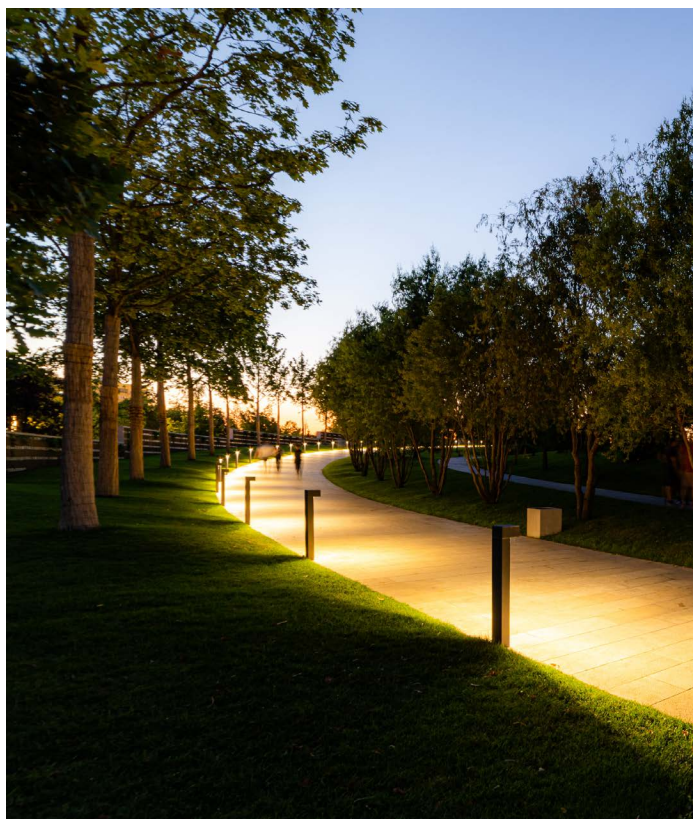
¹Consult factory for additional options

²Consult factory for additional pricing

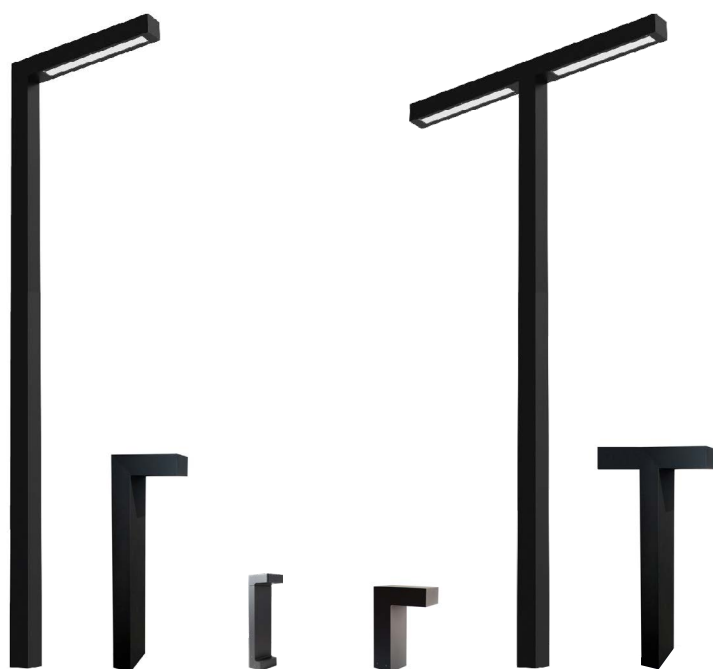
Catalog No.: _____

Performance Specifications	
Flux 850 lm lm (40K)	LER 70 lm/W (40K)
Power 12.5W	120-277v input voltage
Starting temp. rated to -20°F	
Dimmable driver (0-10v) option	Photocell option

Environmental Specifications	
BUG rating B0-U1-G0	
CRI 80	Color temperature options
IP65	ETL listed for wet-locations
Effective Projected Area 0.7 ft2	Marine Grade option
5-year limited warranty	Made in the USA



Luminaires in this series



PL2014 BL350 BL350S-2 BL350S PL2014-2 BL350-2

LUMUX LIGHTING

7803 Industry Ave, Pico Rivera, CA 90660
 sales@lumux.com | 562-801-5100

Content of specification sheet subject to change

LUMUX

BOLLARD

BL350S-2

DATE:

PROJECT:

FIRM:

CATALOG NO.:

COMMENTS:

Photometry

IESNA: LM-63-2002

TEST: 14626184.04 TEST LAB: UL Verification Svs

LUMINAIRE: BL350S-2 DATE: 2023-01-09

IES Classification: Type II Long. Class: Very Short

Luminaire Lumens 861 (4000K)

Luminaire Efficacy Rating (LER) 70

Total Luminaire Watts 12.33W

Upward Waste Light Ratio 0.01

Max. Candela 540.9

Max. Cd. < 90° Vertical 540.9

Max. Cd. (At 90 Deg. Vert.) 5.5 (0.6%)

Max. Cd. (80 to <90 Deg. Vert.) 8.4 (1.0%)

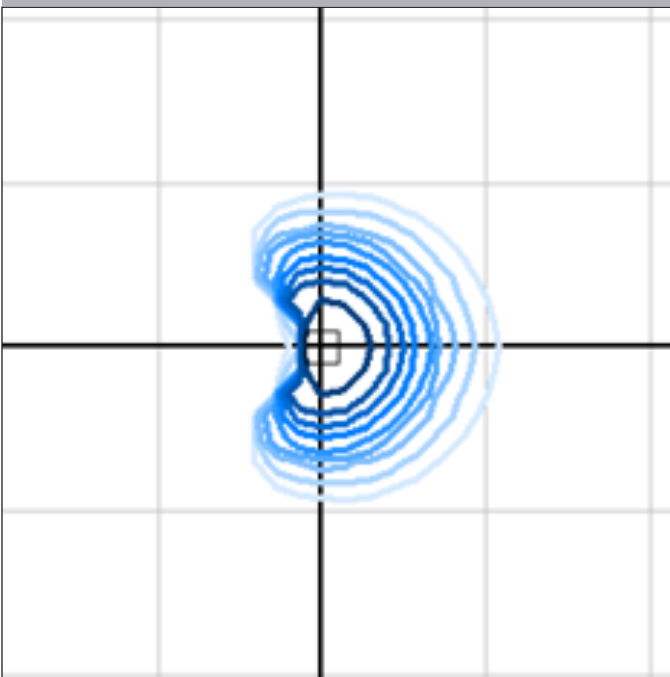
Cutoff Classification NA

BUG Rating B-U1-G0

Technical aspects may change without notice.

IES Mounting Height for photometry plans: 16" / 1.35'

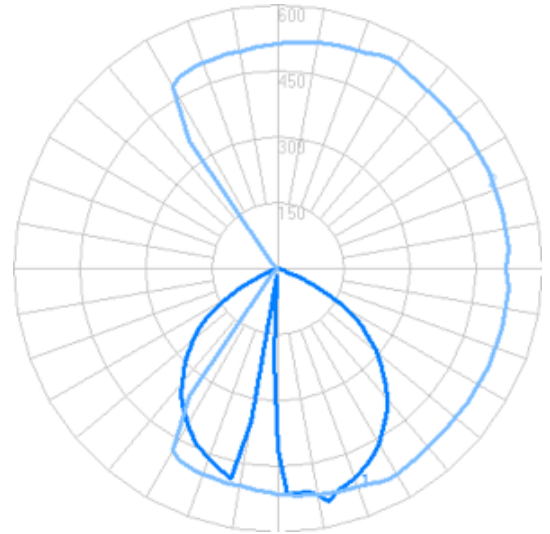
Iso-illuminance



Foot-candles: 0.1, 0.2, 0.5, 1, 2, 5, 10, 20, 50 | Grid spacing 5'

Sample isoilluminance plot. For actual values, use Lumux IES file with photometry software and correct surface reflectances.

Candela

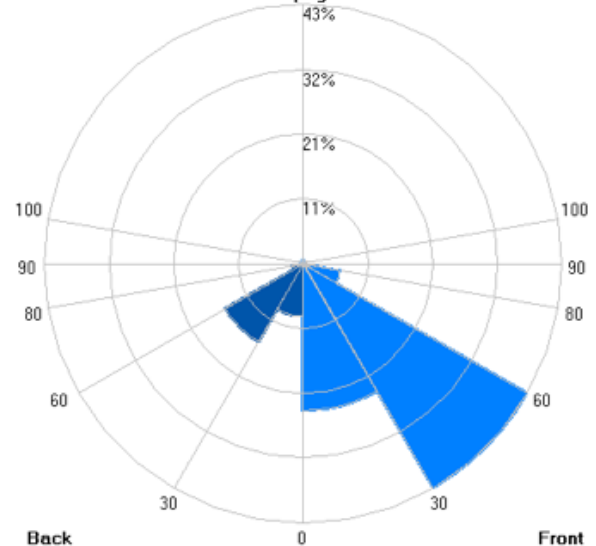


Zonal Lumens

LCS	Zone	Lumens	%Lum.
FL	(0-30)	210.3	24.4
FM	(30-60)	369.8	43.0
FH	(60-80)	53.4	6.2
FVH	(80-90)	2.2	0.3
BL	(0-30)	74.6	8.7
BM	(30-60)	128.1	14.9
BH	(60-80)	15.2	1.8
BVH	(80-90)	0.1	0.0
UL	(90-100)	1.6	0.2
UH	(100-180)	5.1	0.6
Total		860	100

% Luminaire Lumens

Uplight



LUMUX LIGHTING

7803 Industry Ave, Pico Rivera, CA 90660

sales@lumux.com | 562-801-5100

Content of specification sheet subject to change